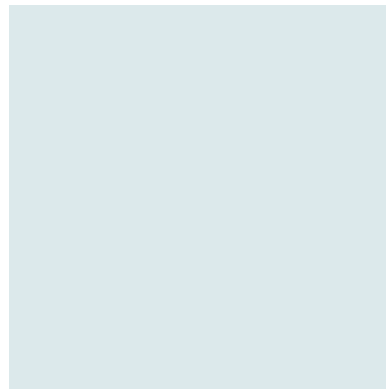
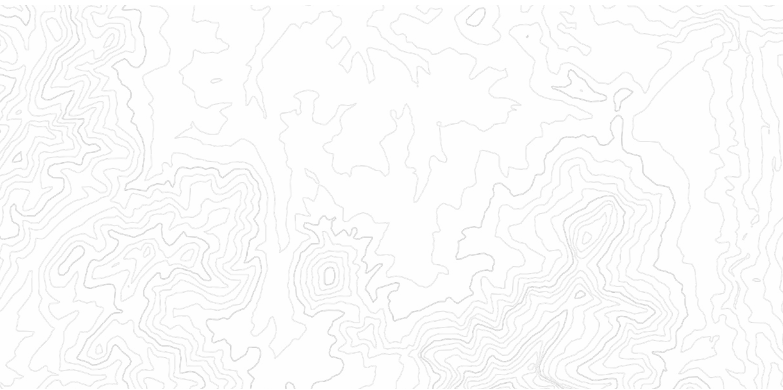
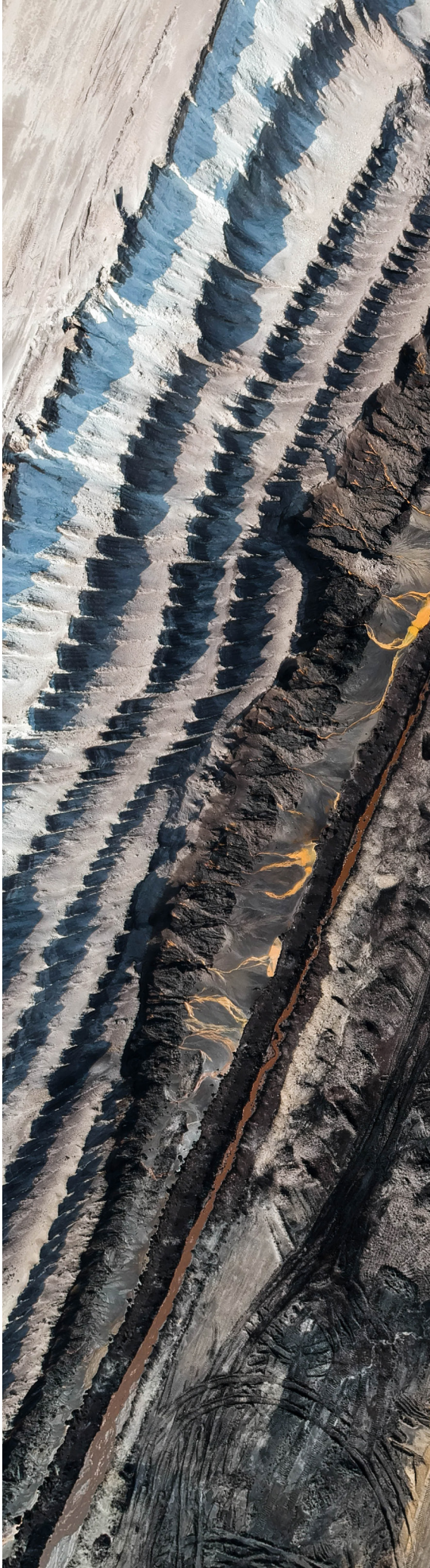




CAPABILITY STATEMENT

MINING





Ritchie Midgley Consulting Engineers South Africa (RMCE) offers professional consulting engineering services in the field of civil and structural engineering to a wide range of private, corporate and government organizations (both nationally and internationally), for projects within the mining and minerals sectors in particular.

RMCE is based in Johannesburg, South Africa, and provides services to an international client base for a wide range of civil and structural design solutions related to ore processing and materials handling facilities, heavy industry, and bulk civil infrastructure in multiple geographies globally. Locations in which we have been active include, South America, Central America and the Caribbean, Europe, Southeast Asia, and Africa. Recent large projects include both hurricane and significant seismic loading in heavy mining structures and infrastructure projects located in Columbia, the Dominican Republic, and Chile.

Our team of highly qualified and experienced engineers are well versed in multiple international design codes (compliant with the American, Eurocode, Chinese, SANS, British, Australian and DIN codes), and have designed numerous structures, from site specific, to mineral processing, and the mining environment.

RMCE service offerings range from participating in Conceptual and Feasibility Studies, right through to Project Execution and Management, and have worked successfully for various mining houses, project management, and consulting companies within the mining industry.

RMCE has undertaken projects in the diamond, gold, platinum, manganese, iron ore, chrome, mineral sands, rare earth metals, base metals, coal mining, and quarrying sectors. Our work includes: the civil and structural design of inclined shafts, heavy equipment foundations, retaining walls, process plants, vibration sensitive structures for mills, crushers and screens, large diameter silos, storage bunkers (above and below ground), storage buildings, staithes, large diameter thickener tanks and reservoirs, bulk material handling structures (including rail tippers and load-out stations), and conveyors (overland, elevated, tripper, and curved for flat belts and pipe belts). This also includes the general process and ancillary plant design, using concrete and structural steelwork; we are also competent in the design of masonry structures, gabions, and related works.

Our capabilities extend to underground infrastructure, as well as general surface infrastructure. This includes: bulk earthworks, vehicle access and haul roads, heavy industrial crane buildings and warehouses (recent structural steel building projects ranging in footprint area from 500m² up to 17 000m²), earth moving equipment (EMV), workshops with up to 30-tonne cranes, pipelines, underground infrastructure, mine office complexes and associated bulk services such as water, sewerage, and storm water reticulation.

RMCE is committed to servicing and supporting associated organizations that provide engineering, procurement and project management services to the mining and processing industries. In this regard, RMCE has core skills internally, as well as established strategic relationships with other specialist consulting engineers, process plant designers, and steel shop detailing specialists who together offer a wide range of services.

RMCE fields of endeavor include the following:

- > Engineering design - reinforced & pre-stressed concrete, structural steelwork and masonry
- > Wind sensitive and dynamic structural design
- > Specialist engineering design peer review and audit services
- > Project management
- > Construction supervision
- > Contract management
- > Contract documentation and administration
- > Bulk earthworks
- > Road infrastructure
- > Hydraulic structures relating to dams, weirs, and bridges
- > Storm water management and surface water studies
- > Civil engineering infrastructure for mines relating to water, sanitation, storm water and roads
- > Bulk services relating to water supply and sanitation, including pump stations and pipelines
- > Feasibility studies relating to all civil infrastructure for mining and mineral projects

SOME RECENT MINING PROJECTS INCLUDE THE FOLLOWING:

- Zimplats Ngezi Bimha (Portal 4) Redevelopment – Primary Crusher and Vehicle Cross Over: Civil detailed design. (FLSmith / Sandvik)
- Zimplats Ngezi Underground Expansion Bimha (Portal 4) Redevelopment – Underground Workshops: Civil detailed design. (FLSmith / Sandvik)
- Tongo Diamond Mine, Sierra Leone (METC) – Process plant design and materials handling (civil & structural design)
- Kipushi Zinc Mine, DRC (METC) – Surface infrastructure, process plant design & bulk materials handling (civil & structural design)
- Pueblo Viejo, Dominican Republic (SENET) - Process plant design & bulk materials handling (civil & structural design)
- Mutoshi Copper & Cobalt Mine, DRC (METC) – Surface infrastructure, process plant design & acid plant (civil & structural design)
- Sibanye Reflux Classifier Modular Plant Project – Sibanye UG2 Concentrator: civil design and construction.
- Exxaro Dorstfontien West 4 Seam Project - CHPP & associated materials handling (civil design & construction)
- Sishen Iron Ore Mine: DMS and Jigs Slimes Handling Integration (P&C) – Pump stations and piping infrastructure (civil & structural design)
- Bisie Tin Mine, DRC – Structural design (DRA)
- Nokeng Fluorspar Mine – Structural design (DRA)
- Petronas, Malaysia – Bulk materials handling infrastructure
- Port of Ploce, Croatia (Ivicom) - Bulk materials handling infrastructure
- South32 Vandyksdrift – 600tph Coal CHPP & associated materials handling (civil design & construction)
- Vale Moatize Phase II Expansion Project, Mozambique - materials handling infrastructure conveyors and transfer stations
- Vale Malaysia VMMP and related on-shore and off-shore materials handling structure design audits
- ENRC Estima Coal Project. Mozambique – Feasibility study for 50km overland conveyor including bulk load-out station and 300m span cable suspension bridge
- Tronox – Namakwa Sands Illmenite Plant (Design & construct)
- Grootgeluk Coal – Medupi materials handling infrastructure conveyors and transfer stations
- Mafube Coal Project - materials handling infrastructure conveyors and withdrawal tunnel
- Tharisa Minerals PGM Plant
- Konkola North Tailings Storage Facility
- Camrose DMS Copper Plant, DRC – Processing plant and materials handling infrastructure
- Dishaba Platinum Mine

Ritchie Midgley Consulting Engineers are equipped with state-of-the-art computing software, and can design to suit international and national codes and standards. Drawings are produced in 2-D and 3-D model format, which can be integrated into partnering post-design drawings and clash detection systems. RMCE has been responsible for the structural design of some of the largest local construction contracts, but is equally adept at efficient handling of small projects.





CONTACT US

If you are looking for a professional engineering services firm that delivers exceptional civil and structural engineering services and solutions across a wide range of industries and projects, please contact us.

Ritchie Midgley Consulting Engineers (Pty) Ltd

ADDRESS:

Unit 1 & 2 Waterfall View,
Waterfall Park Becker Road,
Midrand,
1685

PO Box 7991
Halfway House
1685
South Africa

PHONE:

(International +2711) (National 011) 805-6090

FAX:

(International +2711) (National 011) 805-6093

EMAIL:

rmce@rmce.co.za

www.rmce.co.za